

# STRATOTILE™ ACOUSTIC CEILINGS

Primacoustic StratoTile ceiling panels offer the same absorption characteristics of Broadway panels but in standard drop ceiling tile sizes and finishes, making them ideal for use in boardrooms, offices, schools and commercial spaces where standard wall mounted absorption panels may not be an option. Constructed from 6lb per cubic foot rigid fiberglass, StratoTiles are fully encapsulated with a micro-mesh then covered in a bright white fiberglass facing to blend with typical drop-ceiling applications. StratoTiles have been tested to meet stringent Class-1 fire ratings, making them suitable for use in all residential and commercial spaces. Panels are available in 2 standard drop-in ceiling tile sizes, in both trim and reveal edge treatments for 15/16" (24mm) ceiling grids.



**SPECIFICATIONS:**

Core Material	Formed, semirigid inorganic glass fibers
Facing	Fiberglass tissue micro mesh sealed with water based latex paint
Color	Absolute White
Grid Spacing	15/16", T24 (24mm grid)
Grid Sizes	2' x 2' and 4' x 2'

**DIMENSIONS:**

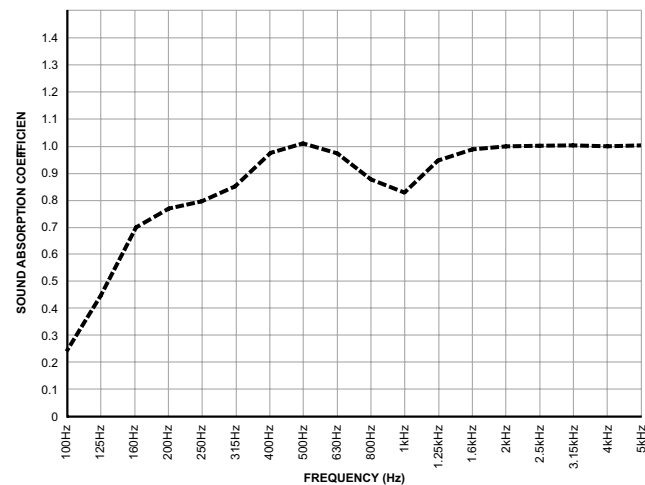
ORDER NO.	DESCRIPTION	HEIGHT	WIDTH	DEPTH	EDGE	BOX QTY.
P210-2424-00	2' x 2' Trim	23.75" (603mm)	23.75" (603mm)	0.75" (19mm)	Trim	12
P211-2424-00	2' x 2' Reveal				Reveal	12
P210-2448-00	4' x 2' Trim	47.75" (1213mm)	23.75" (603mm)	0.75" (19mm)	Trim	6
P211-2448-00	4' x 2' Reveal				Reveal	6

**ABSORPTION CHARACTERISTICS\*:**

Sound absorption coefficient data.

Panel Depth	125Hz	250Hz	500Hz	1kHz	2kHz	4kHz	NRC
3/4" (19mm)	0.45	0.80	1.00	0.90	1.00	1.00	1.00

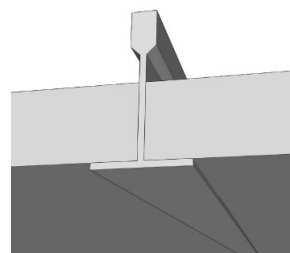
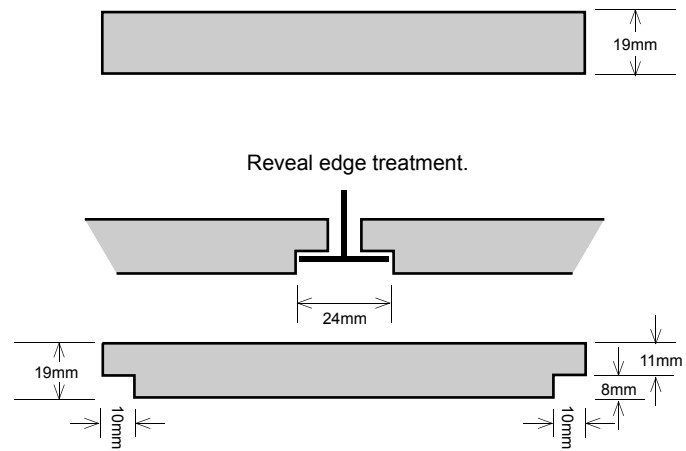
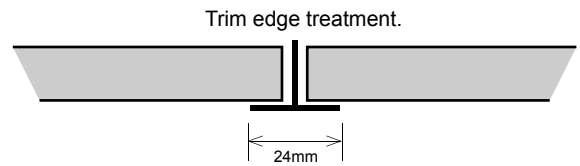
\*\* Testing performed by Muller - BBM. The test method conformed explicitly with the requirements of the ISO 354 measurement of sound absorption in a reverberation room and ISO 11654.



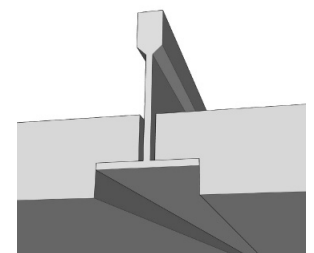
**FIRE & BURN PERFORMANCE:**

TEST	CLASS	FLAME SPREAD	SMOKE DENSITY
ASTM E 84-05*	1 OR A	5 FSI	15 SD
CAN/UL-S102	1 OR A	2 FSC1	10 SD
BS 476 Parts 6 & 7	1 OR A		

\*Standard test methods for surface burning characteristics of building materials is used to measure and describe the response of materials, products, or assemblies to heat and flame under controlled conditions, but does not by itself incorporate all factors required for fire-hazard or fire-risk assessment of the materials, products, or assemblies under actual fire condition.



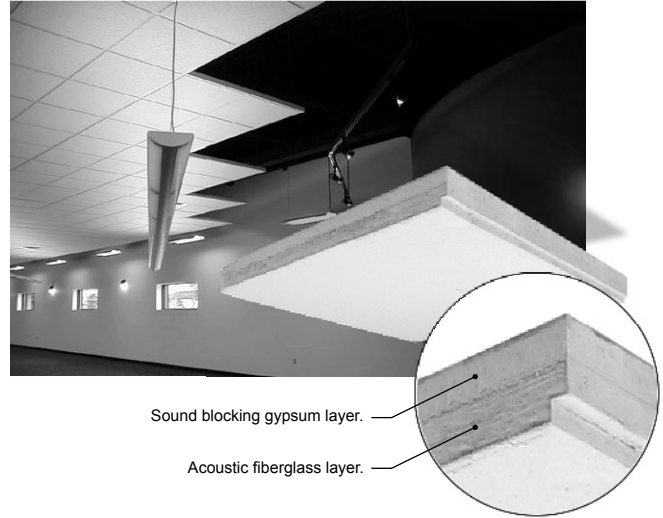
Trim edge treatment.



Reveal edge treatment.

# THUNDERTILE™ ACOUSTIC CEILINGS

Primacoustic ThunderTile ceiling panels combine the acoustic absorption of Broadway fiberglass panels with the sound-stopping mass of 1/2" (12mm) gypsum board. This composite tile is ideal for use in board rooms, schools, legal & medical offices where room acoustics need to be controlled and privacy maintained by reducing sound transmission between rooms. ThunderTiles are fully encapsulated with a micro-mesh then covered in a bright white fiberglass facing to blend with typical drop-ceiling applications. ThunderTiles have been tested to meet stringent Class-1 fire ratings, making them suitable for use in all residential and commercial spaces. Panels are available in 2 standard drop-in ceiling tile sizes, in both trim and reveal edge treatments for 15/16" (24mm) ceiling grids.


**SPECIFICATIONS:**

Core Material	Formed, semirigid inorganic glass fibers
Backing	1/2" (12mm) Gypsum board
Facing	Fiberglass tissue micro mesh sealed with water based latex paint
Color	Absolute White
Grid Spacing	15/16", T24 (24mm grid)
Grid Sizes	2' x 2' and 4' x 2'

**DIMENSIONS:**

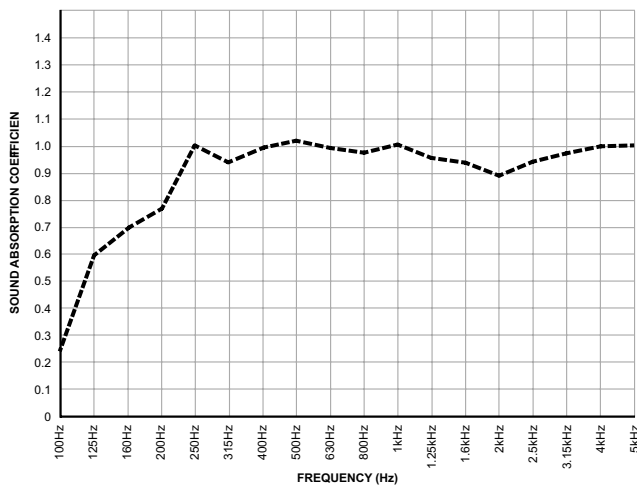
ORDER NO.	DESCRIPTION	HEIGHT	WIDTH	DEPTH	EDGE	BOX QTY.
P200-2424-00	2' x 2' Trim	23.75"	23.75"	0.75"	Trim	8
P201-2424-00	2' x 2' Reveal	(603mm)	(603mm)	(19mm)	Reveal	8
P200-2448-00	4' x 2' Trim	47.75"	23.75"	0.75"	Trim	4
P201-2448-00	4' x 2' Reveal	(1213mm)	(603mm)	(19mm)	Reveal	4

**ABSORPTION CHARACTERISTICS\*:**

Sound absorption coefficient data.

Panel Depth	125Hz	250Hz	500Hz	1kHz	2kHz	4kHz	NRC
1" (27mm)	0.6	1.0	1.10	1.0	0.9	1.00	0.95

\*\* Estimated acoustic absorption based StratoTile testing performed by Muller - BBM and 1/4 wavelength calculation.


**FIRE & BURN PERFORMANCE:**

TEST	CLASS	FLAME SPREAD	SMOKE DENSITY
ASTM E 84-05*	1 OR A	5 FSI	15 SD
CAN/UL-S102	1 OR A	2 FSC1	10 SD
BS 476 Parts 6 & 7	1 OR A		

\*Standard test methods for surface burning characteristics of building materials is used to measure and describe the response of materials, products, or assemblies to heat and flame under controlled conditions, but does not by itself incorporate all factors required for fire-hazard or fire-risk assessment of the materials, products, or assemblies under actual fire condition.

