

***Panolam, the company that engineered***

***FRL fiber reinforced laminate, brings you***

***FRP fiberglass reinforced plastic***

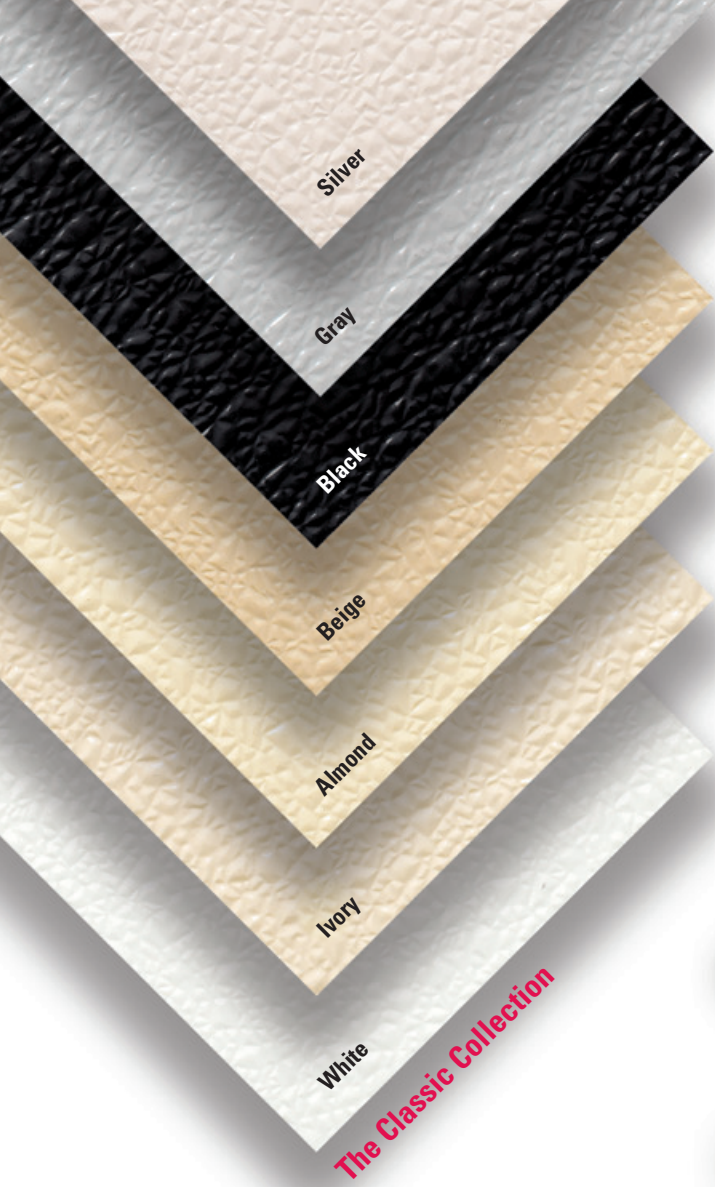
***for your most challenging***

***commercial installations***

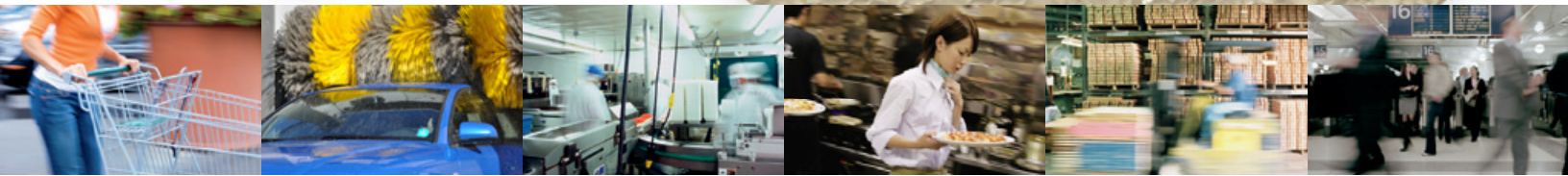
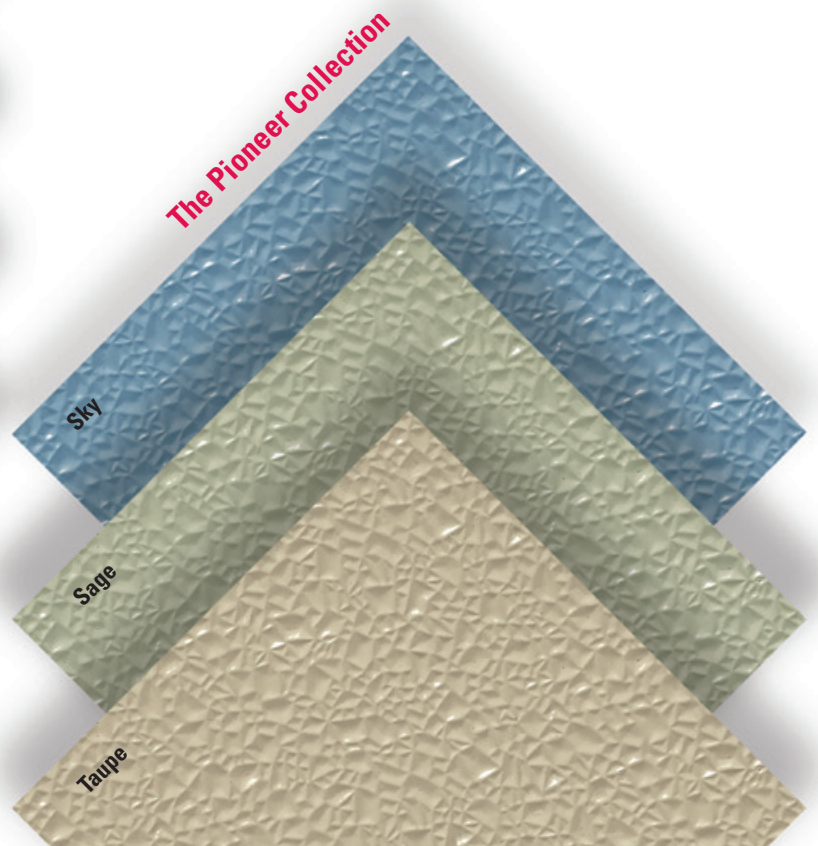
# FRP

**Fiberglass Reinforced Plastic**





FRP offers a selection of colors in two distinctive palettes. The Classic Collection gives you a range of traditional white, black and neutral shades that match perfectly with any location. In our Pioneer Collection you'll find a trio of rich colors that set Panolam FRP apart from similar products.



## Technical Information

| Class A Fire Rating  |         | <i>.090" thickness</i> |  |
|--|---------|------------------------|--|
| Physical Property  | Value   | Test Method            |  |
| Flexural strength, psi   | 14,000  | (ASTM D638)            |  |
| Flexural modulus, psi × 10 <sup>6</sup>                        | 0.55    | (ASTM D638)            |  |
| Tensile strength, psi  | 6000    | (ASTM D790)            |  |
| Tensile modulus, psi × 10 <sup>6</sup>                         | 0.79    | (ASTM D790)            |  |
| Barcol hardness  | 35      | (ASTM D2538)           |  |
| Coefficient of thermal expansion, in/in – F × 10 <sup>-5</sup> | 3.2     | (ASTM D696)            |  |
| Water absorption, %  | 0.2     | (ASTM D570)            |  |
| Surface burning  | Class A | (ASTM E-84)            |  |

| Class C Fire Rating   |         | <i>.090" thickness, embossed</i> |  |
|---|---------|----------------------------------|--|
| Physical Property   | Value   | Test Method                      |  |
| Flexural strength, psi  | 14,000  | (ASTM D790)                      |  |
| Flexural modulus, psi × 10 <sup>6</sup>                               | 0.55    | (ASTM D790)                      |  |
| Tensile strength, psi   | 5600    | (ASTM D638)                      |  |
| Tensile modulus, psi × 10 <sup>6</sup>                                | 1.01    | (ASTM D638)                      |  |
| Barcol hardness   | 35      | (ASTM D2538)                     |  |
| Coefficient of linear thermal expansion, in/in – F × 10 <sup>-5</sup> | 3.51    | (ASTM D696)                      |  |
| Water absorption, %   | 0.2     |                                  |  |
| Surface burning   | Class C | (ASTM E-84)                      |  |

## ***Fiberglass Reinforced Plastic***

FRP is the wall and ceiling panel from Panolam Industries for those high traffic installations requiring durability and high sanitary standards as well as moisture, mildew and chemical resistance. This is the hardworking, easy-to-clean surface you need for utility and service areas.

Available in a range of colors, FRP easily fits with any interior style. And, because it's engineered to last, it doesn't call attention to itself with a worn out look that can quickly appear with other surfaces. In most cases, traditional materials such as ceramic tile, stainless steel, painted drywall or concrete simply can't provide the combination of durability, ease of maintenance and cost effectiveness offered by FRP.

Panolam FRP is a product that resists extreme changes in temperature and humidity. Manufactured in standard building product sizes, it can be installed on most common substrates and finished with readily available seam and trim materials.

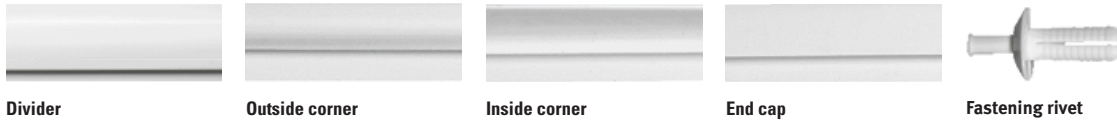
FRP is manufactured and tested to perform in locations such as:

- Commercial Kitchens
- Public Restrooms
- Hospitals
- Schools
- Correctional Facilities
- Restaurants
- Car Washes
- Meat and Dairy Facilities
- Coolers and Freezers
- Supermarkets
- Clean Rooms and Laboratories

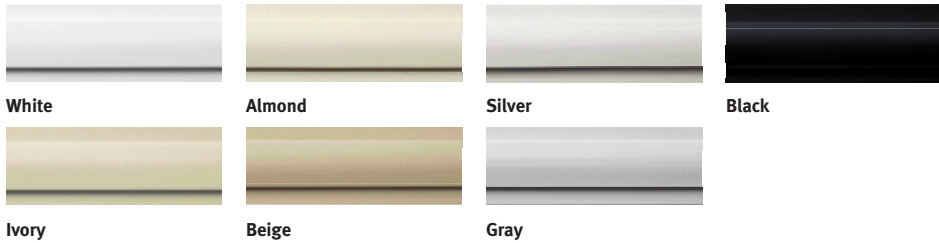
For more information on how FRP can work for you, contact your local distributor or call Panolam at 866-925-4FRP.

## Seam Treatments and Moldings

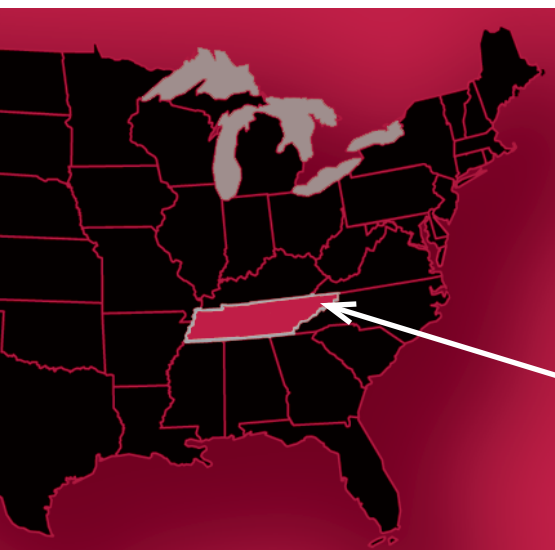
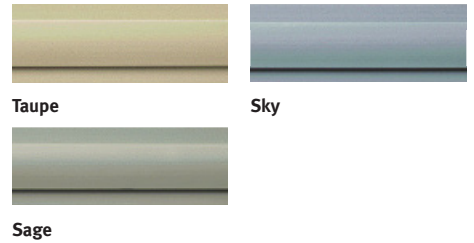
Panolam FRP offers a variety of color matched seam and molding treatments to complete your installation.



### The Classic Collection



### The Pioneer Collection



Panolam has been known for the quality of their product design, engineering and manufacturing for more than 60 years. This reputation is built on the company's extensive product line of surfacing solutions for virtually any location and situation.

From the beginning, Panolam has taken pride in the skill and craftsmanship of the workers in their U.S.-based manufacturing facilities. The production of FRP at Panolam's state-of-the-art factory in the heartland of Tennessee continues this tradition of **American made quality.**

Take a closer look at FRP and you'll understand why we believe it's the product you can rely on for many years to come.

Panolam® **FRP** Fiberglass Reinforced Plastic

**Panolam Industries**  
 20 Progress Drive  
 Shelton, CT 06484  
 1-866-925-4FRP  
[www.panolam.com](http://www.panolam.com)

